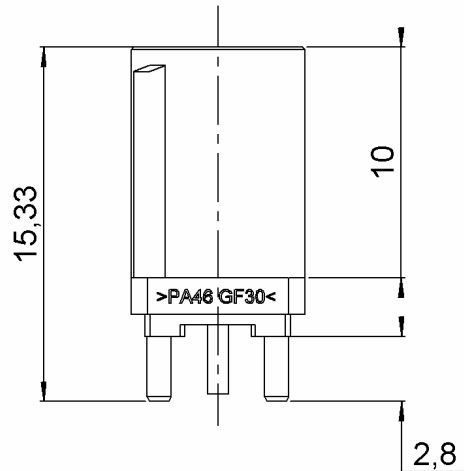


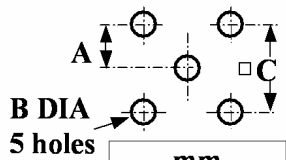
STRAIGHT PCB RECEPTACLE

R197.150.D07

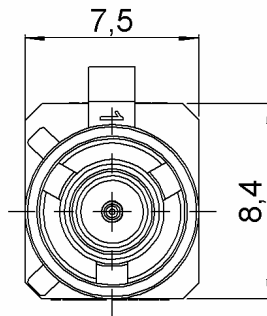
Series : **SMB**
CARLOCK



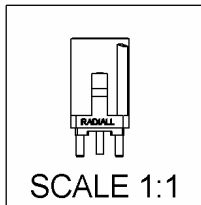
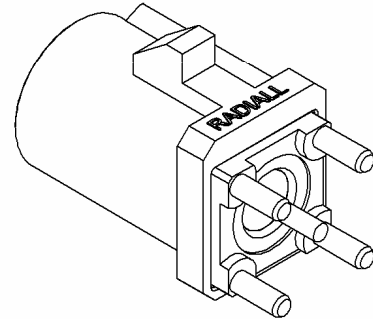
PANEL CUT OUT



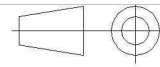
	mm	
	Maxi	mini
A	2.59	2.49
B	1.4	1.3
C	5.16	5



CODING D



All dimensions are in mm.



COMPONENTS	MATERIALS	PLATINGS (µm)
BODY	BRASS	TIN 3 OVER NICKEL 2
CENTER CONTACT	BRASS	GOLD 0.5 OVER NICKEL 2
OUTER CONTACT	-	-
INSULATOR	PTFE	-
GASKET	-	-
OTHERS PARTS	PA 46 GF30 (STANYL TE200F6) Color	-
-	BORDEAUX(RAL4004)	-
-	-	-
-	-	-

Issue : 0648 E

In the effort to improve our products, we reserve the right to make changes judged to be necessary.



STRAIGHT PCB RECEPTACLE

R197.150.D07

Series : **SMB**
CARLOCK

PACKAGING

SPECIFICATION

Standard	Unit	Other
100	'W' option	Contact us

QS9000

ELECTRICAL CHARACTERISTICS

ENVIRONMENTAL

Impedance **50** Ω
 Frequency **0-4** GHz
 VSWR **1.05*** + **0,0080** x F(GHz) Maxi
 Insertion loss **0.03*** √F(GHz) dB Maxi
 RF leakage - (**57** - F(GHz)) dB Maxi
 Voltage rating **500** Veff Maxi
 Dielectric withstanding voltage **1000** Veff mini
 Insulation resistance **1000** MΩ mini

Operating temperature **-40/+110** ° C
 Hermetic seal **NA** Atm.cm3/s
 Panel leakage **NA**

OTHERS CHARACTERISTICS

Assembly instruction **NA**

Others :
 *COAX TRANSMISSION LINE ONLY

MECHANICAL CHARACTERISTICS

Center contact retention
 Axial force (before soldering) **5** N mini
 Axial force (after soldering) **10** N mini
 Torque **NA** N.cm mini

Recommended torque
 Mating **NA** N.cm
 Panel nut **NA** N.cm

Mating life **100** Cycles mini
 Weight **1,2300** g

Issue : **0648 E**

In the effort to improve our products, we reserve the right to make changes judged to be necessary.

